

For Sale/Lease



Location: 5502 Oberlin Dr.
San Diego, CA 92121

Sale Price: \$4,200,000 - \$207.13/SF
Lease Rate: \$0.75 + NNN

Available: 20,277 SF

- Sorrento Mesa Area
- Excellent Visibility
- 20,277 SF Building on Two (2) Acres of Land
- Ample Parking
- Excellent Access to I-805, I-5, Hwy 56, 52
- Perfect Owner/User Site
- Grade Level Loading with Two Roll Up Doors
- High Profile Building
- Warehouse with Office Space
- Industrial Corridor



For Further Information Contact:

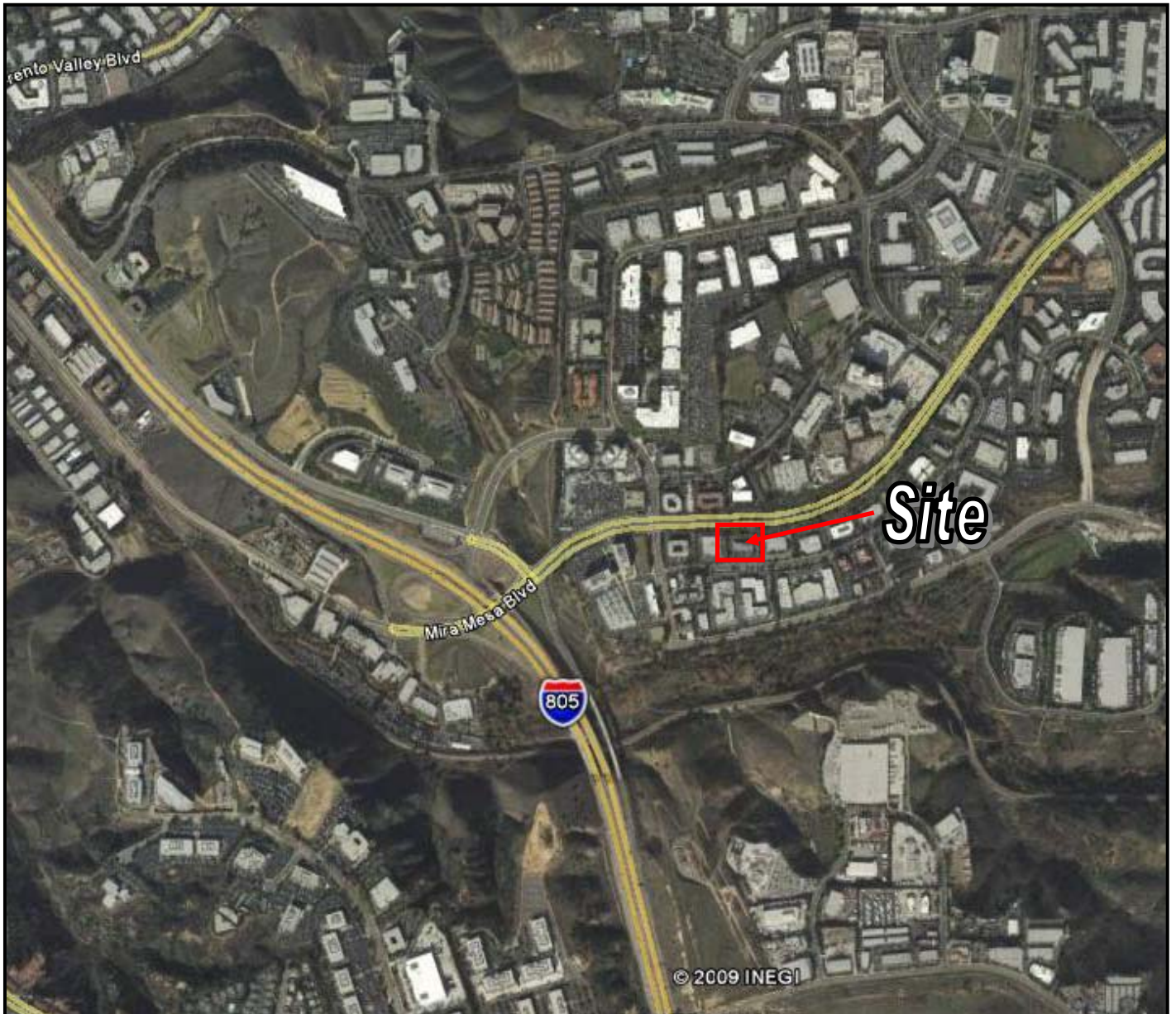
Brian G Pyke
Direct: 619.491.0335 x17
brian@duhscommercial.com
License: 01506790

Scott Duhs
Direct: 619.491.0614
scott@duhscommercial.com
CA License: 01086079

3026 University Ave, Suite B
San Diego, CA 92104

www.DuhsCommercial.com
Fax-619-491-0696

Aerial



3026 University Ave, Suite B
San Diego, CA 92104

www.DuhsCommercial.com
Fax-619-491-0696

Aerial



3026 University Ave, Suite B
San Diego, CA 92104

www.DuhsCommercial.com
Fax-619-491-0696